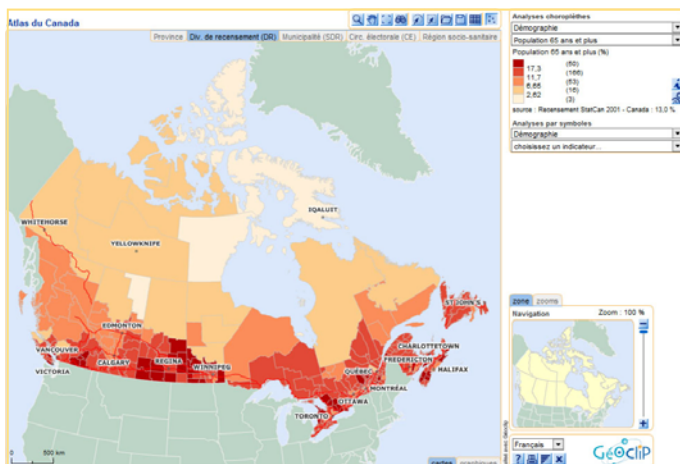


The Géo-Stat team includes specialists in statistics, geomatics and Web data reporting. Our aim is to help organizations to manage their statistical data and to create a more intelligible and meaningful information system.

We have established a very strong partnership with Géoclip that enables us to offer organizations in the USA and Canada a powerful and very user friendly Web-based Interactive geographic system. Our offer includes a whole range of advisory services.

Web site, application and database installation

The Géo-Stat team can help you with the Installation and configuration of Géoclip on a Web server. This includes: installation of the Web and database servers (MySQL, PostgreSQL, MSSQL, Oracle), configuration of PHP, installation and configuration of Géoclip server, etc.



Base map preparation support

We can build base layers for your application, which are typically made up of polygonal objects and, are characterized by their detailed mesh structure (e.g., municipalities, health regions, counties, etc.). The basic geographic layers are supplemented by several complementary layers, giving geographic landmarks such as cities, road networks, waterways, etc.

Data preparation support

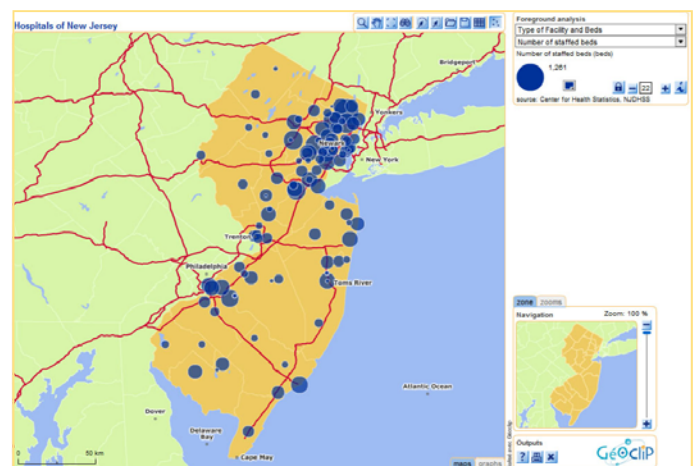
We can organize and optimise your statistical data to make them fit the application's proprietary management tables. The consistency between the spatial nomenclatures and the area codes in the data tables will be monitored. Combinations will be calculated for higher geographic levels. We will also create tables with appropriate information on indicators (name of the indicator, definition, source, etc.)

Reports and graphs

The Géoclip server report function allows you to create a report and graph on each of the territories on the map, presenting their characteristics. You can include several types of graphs and tables in these reports. We can help you to build reports and graphs for your application.

Data advisory service

We are well aware of the wide range of statistical data available in the USA and Canada at the local and regional level (including Statistics Canada and US Census Bureau data). A growing number of them offer public access, even though it sometimes takes time to organize them into thorough, documented databases. We can help you to select sets of data to complement the data that you have already organized.



Training for Géoclip management

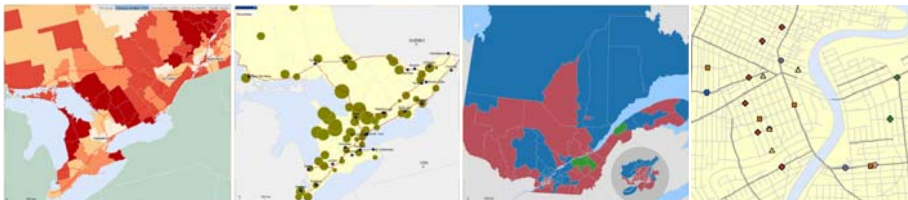
To make the application's administrators fully autonomous, we can organize a skills transfer that will cover updating the database of indicators, importing elementary data into the database, setting cartography parameters, updating base maps, etc.

Géoclip Intuitive and smart cartography

The general principle of Géoclip is to allow the user to select the statistical information that he wants to map, then to set up the map using the software functions. The user browses or clicks on the reactive maps, and then builds himself the geographic framework that he wants, selecting the territories of interest to him. Prints of the maps and reports, PDF outputs and exports into Excel allow him to continue to interact with the information offline.

The application uses the Flash format, which provides optimum display and printing quality whatever the resolution or the size of the screen. Moreover, the user can “play” with the map in a very flexible, rapid manner because the Flash module works from within the user’s workstation during these interactions between the user and the map.

Géoclip has a vast palette of thematic analyses : Analysis by coloured areas (or choropleth, for continuous variables), Analysis by proportional symbols, to show absolute quantities , Analysis in individual values, to show qualitative variables (typologies) and Analysis in point symbols, to locate certain points and represent them with qualitative information.

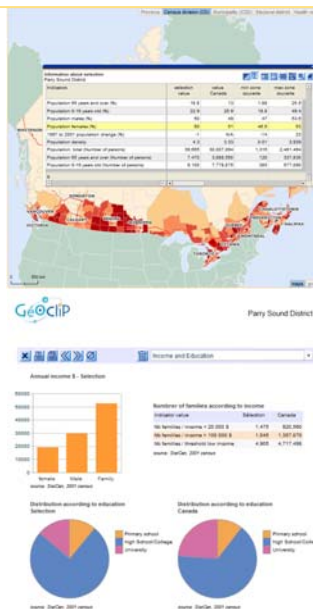


Tables, graphics and reports

With Géoclip, the user is not limited to just presenting maps. The application also allows the information to be displayed in the form of a table, a graphic or a report.

By mouse clicking on a particular territory, for example a municipality, the application generates a table showing the data for this municipality as well as the average, minimum and maximum values for the reference zone. This reference zone can be the region, the province or even the country in which the municipality lies.

In addition to the table about the municipality, the application can generate a report about the same zone. This report is in the form of several pages containing different types of graphics (histogram, line graph, pie chart, etc.) as well as tables. The report thus provides a quantified image of the main indicators for the municipality selected. It is possible to create a customized report for each municipality, or for a group of municipalities.

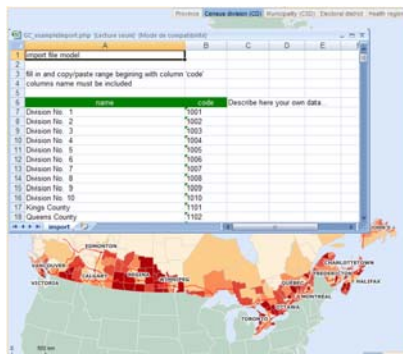


In addition to the maps, Géoclip also has interactive tables, graphics and reports.

Importing your own data

While the user can “play” with all the information already in the application’s database, he can also import his own data by simply copying and pasting. He can then create his own indicators, which will be accessible in the list of indicators, just as if these had been programmed in by the application’s designer.

By using the Save functions, the user can then save his project and share it with other users.



Data exchange with other servers

WMS protocol broadens the field for data than can be accessed by the application. Thus a Géoclip server can download an image or a map layer distributed by another server anywhere in the world, as long as the projection systems are compatible.

In the other direction, a Géoclip application itself becomes a WMS server, offering dynamic, thematic maps to other applications, in the spirit of the CGDI.

